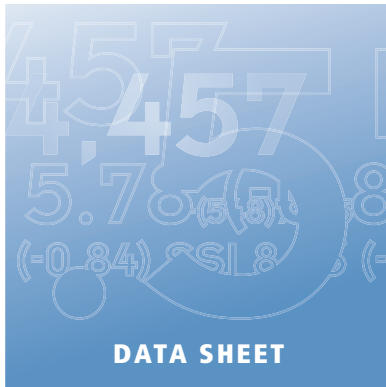


ETL for ACL AuditExchange™ 2009



ETL for ACL AuditExchange is powered by Informatica®, the worldwide market leader in Extract, Transform and Load (ETL) technology.

ETL for ACL AuditExchange allows your audit team to enjoy streamlined access to a multitude of sources — from ERP and complex databases to industry-specific data. ETL allows you to:

- Extract large volumes of data from different platforms and systems at scheduled times
- Refresh the data on a recurring basis to support your repetitive and continuous audits
- Populate the AuditExchange repository with data in ACL format for use, re-use and sharing across the team

Benefits

Provide the right information at the right time

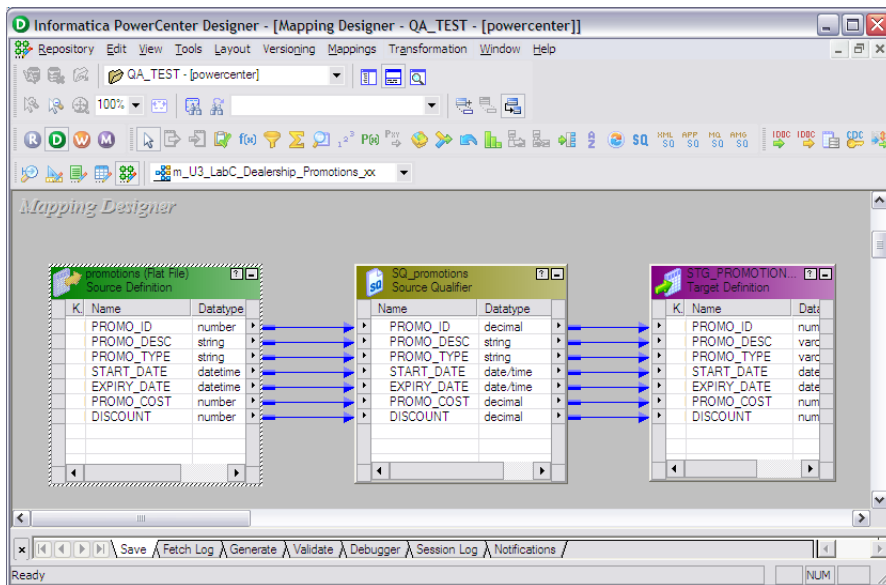
With ETL for ACL AuditExchange, you can accumulate data knowledge within the AuditExchange repository. Your audit department can access:

- General purpose data sets for multiple use
- Defined data sets for specific audit objectives
- Data dictionaries

Enhance collaboration and productivity within the audit team

ETL for ACL AuditExchange helps your audit team work faster and better together. Using the AuditExchange repository, teams can easily share and re-use data work and results.

ETL for ACL AuditExchange is easy to deploy and manage across audit teams whose members have different roles and responsibilities. You can assign one or more data access specialist/s from the audit team who are technically accomplished. They can administer and manage data brought in with ETL for ACL AuditExchange and ensure that all team members use a consistent and proven set of data to complete high-quality audits.



A Simple Transformation data mapping with ETL for ACL AuditExchange

Available Data Sources

ETL for ACL AuditExchange includes:

- » Flat files
- » Delimited
- » ODBC-compliant data sources
- » Sybase
- » SQL
- » Informix
- » Oracle
- » dBase
- » Microsoft Access
- » Simple XML

Specialized Connectors for Complex Databases include:

- » DB2
- » Teradata
- » IMS for z/OS
- » VSAM for z/OS
- » ADABAS
- » IDMS for z/OS
- » SAS
- » Hyperion Essbase

Specialized Connectors for ERP systems include:

- » JD Edwards Enterprise One
- » JD Edwards World
- » Siebel CRM
- » Salesforce.com
- » SAP CRM
- » SAP BW
- » SAP ERP
- » Oracle e-Business Suite
- » PeopleSoft Enterprise

Specialized Connectors for Complex Data include:

- With a Complex Data Exchange, you can reach:*
- » PDF
 - » Spreadsheet data
 - » Report (Print) files
 - » Complex XML
 - » XBRL
 - » SAP Private file formats
- Add-ons to the Complex Data Exchange include format libraries for:*
- » SWIFT
 - » HIPAA
 - » HL7
 - » AFP
 - » EDI-X12
 - » EDI - FACT



System Requirements

The system requirements for the ETL for ACL AuditExchange client component are as follows:

Supported Operating Systems

- Windows XP (SP2)

Recommended Requirements

- Pentium 1.8-gigahertz (GHz) processor or faster
- One gigabyte (GB) of RAM or higher
- 80GB Hard Drive or higher
- 10GB of additional hard drive space required for storage of data files
- DVD-ROM drive
- TCP/IP connectivity

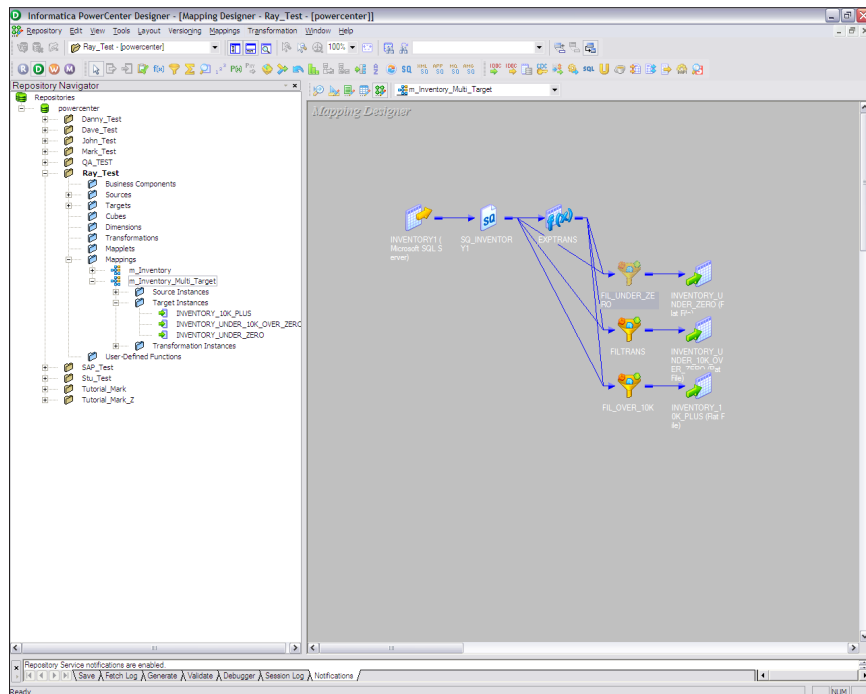
The system requirements for the ETL for ACL AuditExchange server component are as follows:

Supported Operating Systems

- Microsoft Windows Server 2003 Release 1 (SP1) or Release 2 (SP2)

Recommended Requirements

- A quad-core or two dual-core processors or processor at 2.5GHz or higher
- 8GB of RAM
- At least 2GB of disk space for the ETL for ACL AuditExchange application components
- Sufficient disk space for data extracts



Transformation of one table into multiple output files with ETL for ACL AuditExchange



■ acl.com
info@acl.com

About ACL Services Ltd.

ACL Services Ltd. is the leading global provider of technology for audit and compliance professionals. Combining market-leading audit analytics software and professional services expertise, ACL solutions give auditors confidence in the effectiveness of internal controls and the integrity of the transactions underlying business operations.

Since 1987, ACL has enabled auditors to assure sustainable compliance, reduce risk, detect fraud, enhance profitability, and improve business performance. ACL delivers its solutions to more than 215,000 licenced users in over 150 countries through a global network of ACL offices and channel partners. Our customers include 95 percent of Fortune 100 companies, 85 percent of the Fortune 500 and over two-thirds of the Global 500, as well as hundreds of national, state, and local governments, and the Big Four public accounting firms.

ACL, the ACL logo, the ACL logo with the text "Data you can trust. Results you can see.", and Audit Command Language are trademarks or registered trademarks of ACL Services Ltd. All other trademarks are the property of their respective owners.