

AX™ Core is at the center of ACL AuditExchange™

Leveraging server security and speed, AX Core provides powerful analytic processing capabilities and allows users to easily schedule and automate analysis. Its centralized approach ensures the quality and consistency of audit work, and safeguards the most sensitive data in your organization. Built on the proven performance of ACL™ Desktop, it provides more processing power and expanded data access capabilities to help organizations realize significant productivity gains.

Key Benefits

Automation for Greater Efficiency

Automation allows for analysis that previously had to be done repetitively on a manual basis to be done automatically, increasing overall efficiency and freeing up auditors to focus on other value-based audit tasks.

Server Security and Speed

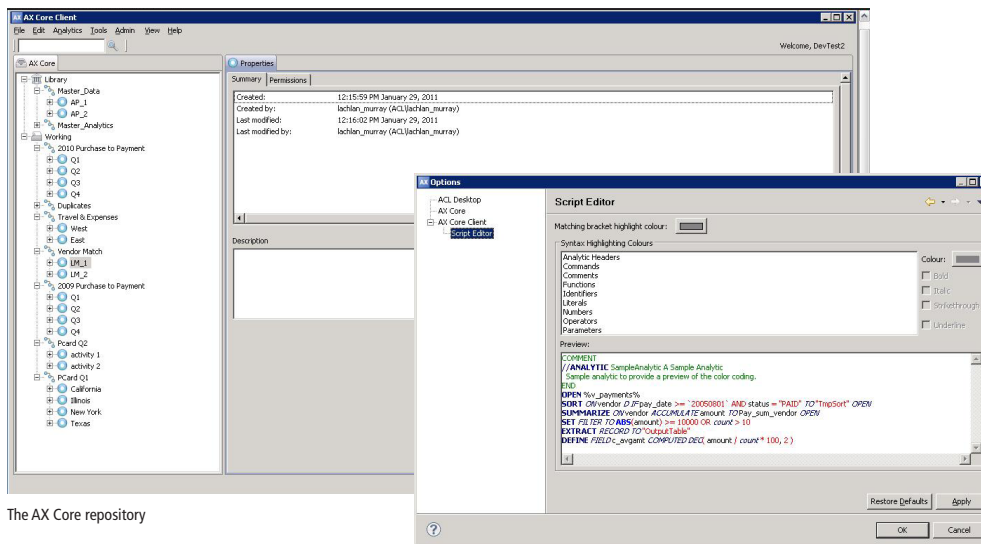
Take advantage of server processing capabilities and security. Data is stored and analyzed on the server, eliminating the need for sensitive data to be stored on laptops and personal computers where it can be compromised. Multiple servers can be networked to create virtually limitless analytic processing power.

Centralized Working Environment

Ensure the quality, repeatability and standardization of work while improving audit processes and efficiency by storing all forms of audit content in a secure central repository. Retain audit knowledge and generate synergies by allowing audit management and team members to centrally view the work of others.

Key Features

- » Automate analytics through the built-in AX Core scheduler – as easy as booking a meeting.
- » Network multiple servers to create virtually limitless analytic processing power.
- » The ACL AuditExchange repository allows for the central storage of all audit content (any file type) structured by individual engagement.
- » Direct database interface for secure, read-only access to distributed instances of Oracle, DB2, and SQL server databases – preserving data integrity and respecting access privileges and rights.
- » AX™ Core Client– An interface allowing the more specialized users to import ACL Desktop content, create and manage engagements, schedule and automate analysis and distribute exceptions.
- » Security and user rights for the AuditExchange central repository, managed through Microsoft's Active Directory, can be applied and managed for specific activities within an audit engagement for both the working and library folder.



The AX Core repository

The AX Core script editor

System Requirements

Prerequisites

- Any prerequisite software components required to complete the install will automatically be installed during the installation process of AuditExchange. The required software components can be found on the ACL Support Center, or installed from the AuditExchange installation DVD.
- (Optional) ACL Components XI. This software must be installed if you want to generate Crystal Reports from ACL on the client or server. This is not required if running on Windows 7.
- Internet Explorer 6.0 or higher must also be installed. If Internet Explorer is not installed, you will need to download and install it using Windows Update.

AX Core Server

- Microsoft Windows® Server 2003 Enterprise Edition x86 (32 or 64 bit versions)
- Microsoft Windows® Server 2008 Enterprise Edition R2 x86 (32 or 64 bit versions)
- Supports both Non-Unicode and Unicode.

Minimum Requirements

- Dual core processor at 2.5GHz or higher (Quad core processor recommended)
- Important: The server must not exceed the quad core processor limit if AX Datasource is installed on the same server.
- 4GB RAM (8GB recommended)
- 2.5GB hard drive space (500GB recommended) for AuditExchange application files and data files
Note: Significant additional disk space may be required to store data extracts, flat files, results, and audit archives.
- DVD-ROM drive (Not required if you are using the web download option)
- TCP/IP connectivity

AX Core Database Platform

- Oracle 10g or 11g (recommended)
- Important: The database instance must be created with "UTF-8" as the Database Character Set and "UTF-8" or "UTF-16" as the National Character Set.
- PostgreSQL 8.3
- Important: The PostgreSQL version included with the AX Core setup wizard is the only supported version.

AX Core Client Components

Supported Operating Systems

- Microsoft Windows® 7
- Microsoft Windows® Vista Ultimate Edition (SP2)
- Microsoft Windows® XP Professional Edition (SP3)

Minimum Requirements

- Pentium 1.8-gigahertz (GHz) processor
- 1GB RAM
- 300MB hard drive space (80GB recommended) for AuditExchange application files and data files
Note: Significant additional disk space may be required to store data extracts, flat files, results, and audit archives.
- DVD-ROM drive (Not required if you are using the web download option)
- TCP/IP connectivity

Important: If your using the Unicode version of AuditExchange you must use the Unicode version of ACL Desktop and vice versa.

AX Gateway

- Microsoft Internet Explorer® 6.0 or higher

AX™ Add-ins for Microsoft Office

- Microsoft Office® 2003
- Microsoft Office® 2007
- Microsoft Office® 2010



■ acl.com
■ info@acl.com

ACL Services Ltd. ACL and the ACL logo are trademarks or registered trademarks of ACL Services Ltd. All other trademarks are the property of their respective owners.

About ACL Services Ltd.

ACL Services Ltd. is the leading global provider of business assurance technology for audit and compliance professionals. Combining market-leading audit analytics software with centralized content management and exception reporting, ACL technology provides a complete end-to-end business assurance platform that is flexible and scalable to meet the needs of any organization.

Since 1987, ACL technology has helped organizations reduce risk, detect fraud, enhance profitability, and improve business performance. ACL delivers its solutions to 14,700 organizations in over 150 countries through a global network of ACL offices and channel partners. Our customers include 98 percent of Fortune 100 companies, 89 percent of the Fortune 500 and over two-thirds of the Global 500, as well as hundreds of national, state and local governments, and the Big Four public accounting firms.