

ACL Services Ltd.

What's Inside

About ACL Services

ACL's PAS Solution

Outlook

ACL Services Ltd.

ACL Services Ltd. of Vancouver, Canada, was founded in 1987 as an audit technology and data analysis firm. More recently, ACL has helped define a new market niche called business assurance analytics. Today, the company employs over 175 people in Canada, and 200 worldwide. In collaboration with a global network of offices and channel partners, ACL manages clients in over 100 countries.

ACL serves a number of industries including banking and finance, retail, healthcare, insurance, manufacturing, utilities, communications, transportation, education and government at all levels. Its clients make up more than 70 percent of the Fortune 500 and 66 percent of the Global 500. A partial list of its customers would include Wells Fargo, Food Lion, Carolinas Healthcare System, John Hancock, Stanford University and Canada Post Corporation, not to mention all of the Big Four accounting firms.

The company's three payment audit software applications are ACL Desktop or Network Edition, Direct Link for my SAP ERP, and ACL Server Editions. All three connect the disparate systems of its clients for analysis, identification and remediation of payment errors, including duplicate payments, overpayments and fraud.

ACL's Payment Audit Solution

ACL's approach is to combine professional audit expertise with erroneous payment detection and analysis software that provides a consistent, user-friendly interface and immediate access to all transactional enterprise data, along with pre-programmed analytic tools and a variety of standardized reports displayed through ACL's tight integration with Crystal Reports.

The audit and technology staff has years of industry experience and is trained to identify and report payment errors from the analysis of millions of transaction records. ACL's methodology was born of best practices and has been honed from years of working with the data from some of the largest financial and accounting systems in the marketplace.

By extracting and combining data of almost any format from mainframe, ERP, legacy systems and PC networks, ACL technology seeks to provide accounts payable, purchasing and audit professionals a comprehensive view of their data to test and report transaction anomalies. Users can read and analyze their entire data repository housed on their ACL Server, separate from original data sources without cumbersome extractions, reducing the bandwidth burden required to move large quantities of data across a network.

ACL Desktop, or its Network Edition, as well as ACL Servers, work together to house and mine audit data with unique algorithms, customized searches conducted by their 170,000 users with little training. ACL's Direct Link for my SAP for ERP, as the name implies, enhances data access capabilities with all SAP tables.. This enables ACL to provide data searches and expand on monitoring and reports not available from SAP ERP systems. Consequently, since its introduction in 2001, hundreds of ACL's clients with SAP systems have installed Direct Link for to improve the monitoring of their transactions through secure, real-time access to all of their SAP data.

Access to data is extremely easy because of ACL's intuitive user interface which allows AP and finance managers to optimize the system for their use. Users may select tables, fields, and records needed for analysis and run tests directly from the data on their ACL system. We found the system easy to use and think that the design of the interface allows for clients to enhance the quality of analysis while saving time and money.

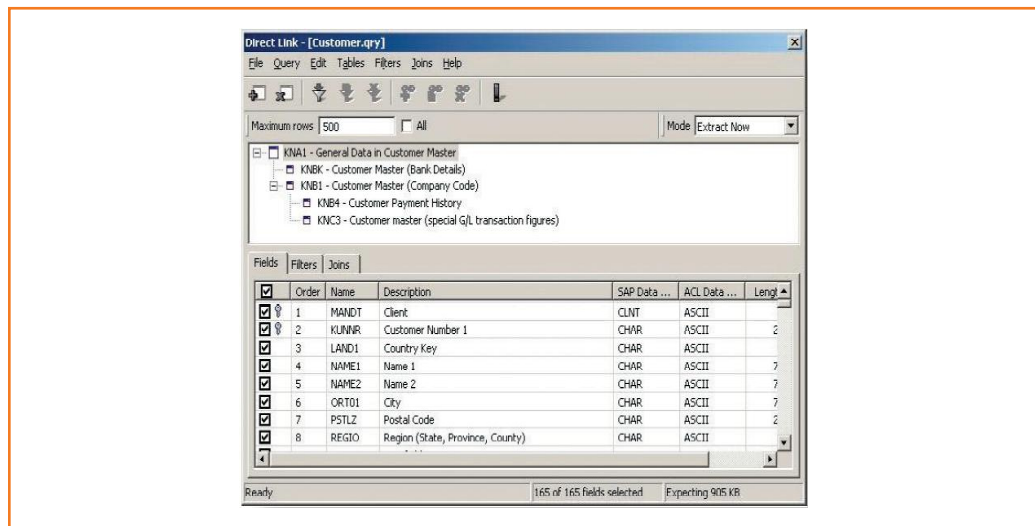
Although ACL captures and continuously compares all enterprise data for real-time analysis, established test routines may be scheduled to run and generate reports at regular intervals

without IT support. The system provides users with intuitive pull-down menus, toolbars, and mouse-clicked commands. Through Crystal Reports, users may drag-and-drop report elements to adjust the data and report format to emphasize trends, exceptions, errors, potential fraud or other areas of interest.

In addition to enhanced integration with Crystal Reports®, ACL provides templates for reporting and analysis as well as the ability to distribute custom-designed report templates within an ACL installed network. We really liked the ability for the analyst to copy and paste report results to and from other Windows applications, a seemingly simple but often important task, and a new feature for ACL audit software applications.

ACL provides a variety of implementation services. It begins with a survey of the goals and objectives of the client in order to appropriately scale the implementation to the task and the population of users. For example, with ACL's turnkey implementation, experienced audit service teams consult with appropriate client representatives during the data integration phase to teach them how to create and automate analytic tests of their data.

Figure 1: Screen Shot of ACL's PAS Solution



ACL devotes a great deal of care and resources to focus on the finer points of maximizing each client's potential benefits and savings from using ACL software to identify and prevent or recoup payment errors. To that end, in addition to training available online, ACL offers classroom training either on-site, at its headquarters in Vancouver or at one of ACL's regularly scheduled classes held at business centers throughout North America.

Training is also available, at a discount, in partnership with the Association of Healthcare Internal Auditors (AHIA) and the Association of College and University Auditors (ACUA). Students receive from 16 to 25 CPE credits per class and may eventually obtain one of three levels of ACL certification as a result of their classroom studies. ACL will train approximately four thousand students in 2006.

In addition to standard support services which are available in multiple languages during normal business hours, ACL also offers a premium support package that includes a 24/7 helpdesk and online Flash Web-based training. These training modules contain real-world content developed by ACL certified trainers from previous case studies. The students are tested for comprehension throughout the introductory course and they have access to an ACL

eTrainer for their questions.

To augment its training and user support services, ACL works with a network of technology and implementation partners that compliment ACL's core offerings. These companies include Concur Technologies, OpenPages, Paisley Consulting, Control Solutions International, Deloitte & Touche LLP, Hudson Financial and SAP.

Outlook

ACL is a software provider with deep domain expertise in audit. In addition, ACL provides technical support, training, implementation services and consulting services in support of their software deployments. We found that its software is intuitive, easy-to-use and offers a range of pre-programmed analytical tools and standardized reports that can be accessed through a tight integration with Crystal Reports. Further, the three versions of ACL's solution—ACL Desktop or Network Edition, Direct Link for my SAP ERP, and ACL Server Edition—ensure that there is an offering to meet every organization's payment audit needs. We were impressed with ACL's ability to offer seamless updates to its clients. For example, ACL developed a routine called "Silent Installation," which enables them to easily deploy future releases.

We find the solution's strength lies in its ability to extract data in any format from virtually any system. The system can provide a comprehensive view of all transaction data housed on the ACL server, eliminating the cumbersome task of data extractions. We also liked the flexibility users have to copy and paste data to and from other Windows applications for further analysis. Finally, ACL's implementation services are comprehensive; beginning with a survey of client goals and objectives and culminating in extensive training and ongoing support.

ACL regularly issues new releases of software as it continues to improve and push the envelope to meet the needs of its customers. ACL 9 enhances the productivity of audit teams by enabling increased collaboration through the sharing of insights, results, and best practices amongst team members. This release features advances in supporting global enterprise IT standards, by being able to read both Unicode and Non-Unicode data through a single product deployment. In addition, users are able to quickly and easily add comments or documents/ website hyperlinks to individual records, providing context for further analysis and report findings.

Given the robust solution functionality and the twenty years of experience ACL has in providing data analysis software and services, it is not surprising that it boasts 70 percent of the Fortune 500 and 66 percent of the Global 500 amongst its customer base. ACL is clearly a leader in developing advanced payment solutions and we expect that they will continue to provide innovation and operational excellence for their clients. One thing to keep in mind while evaluating ACL's offerings is that ACL's audit and technology staff are trained to identify and report payment errors, then provide assistance in the collections process, but not actually recover lost profits for its clients.

In 2005, Harald Will, the founder and still CEO of ACL was named one of Treasury & Risk Management magazine's "100 Most Influential People in Finance." Today, Mr. Will regularly speaks on audit best practices and Sarbanes-Oxley compliance at conferences and is often quoted in national and industry publications like ComputerWorld, Business Week and Investor's Business Daily. ACL Services Ltd. also regularly receives accolades from customers and vendors alike. Those endorsements and the impressive adoption rate of their payment audit solutions are compelling arguments for further investigation of ACL Services Ltd.

To contact this Payment Audit Solutions firm please visit its Web site at the following Internet address: <http://www.acl.com>.