

ACL™ is recognized worldwide as the leading provider of technology for data access, analysis and reporting for audit and financial professionals. ACL technology expands the depth and breadth of your transactional analysis, increases your personal productivity and gives you confidence in your findings.

Providing a unique and powerful combination of data access, analysis and integrated reporting, *ACL* reads and compares enterprise data allowing the source data to remain intact for complete data quality and integrity. *ACL* enables you to gain immediate visibility into transactional data critical to your organization.

ACL enables you to:

- Analyze entire data populations for complete assurance.
- Identify trends, pinpoint exceptions, and highlight potential areas of concern.
- Locate errors and potential fraud.
- Identify control issues and ensure compliance with organizational and regulatory standards.
- Age and analyze financial or any other time-sensitive transactions.
- Cleanse and normalize data to ensure consistency and accurate results.
- Automate analytic testing and receive immediate email notification of results.

Data Access

With *ACL*, you gain visibility into your organization’s information through the ability to directly access and query each and every transaction (from a multitude of sources and systems). Save time and reduce the need to request data from busy IT departments. Conduct the in-depth analysis necessary in today’s complex business and regulatory environments.

This data coverage enables you to examine 100 percent of your transactional data — every field, every record of interest — improving the accuracy and effectiveness of your analysis. Access diverse types of data with ease, including ODBC-compliant databases, variable length record files, legacy files, PDF and report files.

Data Integrity

ACL features read-only access to all your enterprise data; source data is never changed, altered or deleted. *ACL* reads the data at the source — the data is neither constricted nor aggregated. You can go where you need to, wherever your data investigation requires, confident in the knowledge that data quality and integrity are maintained.

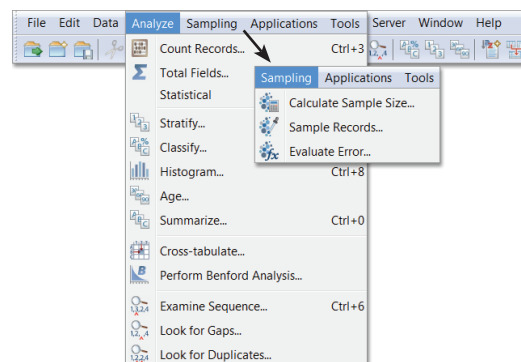
Analysis of Large Data Sets

Take advantage of the capability and unprecedented speed of *ACL* to rapidly process transactions, ensuring 100 percent coverage and the utmost confidence in your results. Complete data analysis tasks in a fraction of the time it used to take. Analyze your data at a rate of up to 10,000 and 100,000 records per second.

Ease of Use

Select, identify and format data with ease using the Data Definition Wizard. Directly import and export Excel®, Access®, Adobe® PDF and XML data with point & click commands. Flexible and powerful analytic capabilities respect varying technical aptitudes. *ACL* features built-in analysis commands so there is no programming language to learn. Get going in days, not months.

Streamline analysis using a wide range of data analysis and audit commands.



Audit Specific Analytics

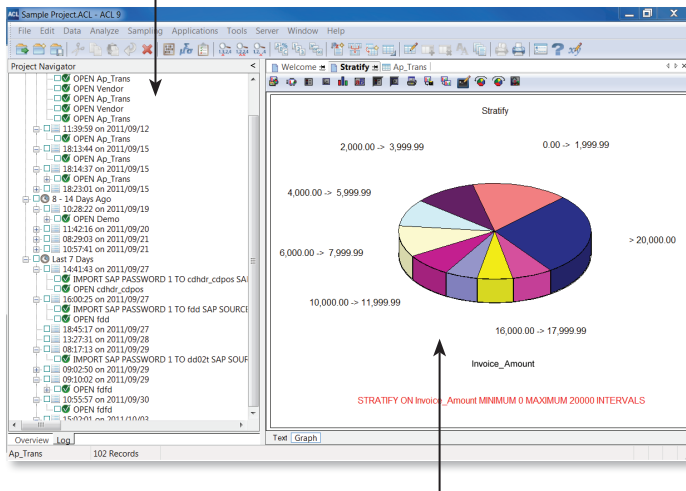
Commands are pre-programmed for data analysis to provide a full range of analytical power, from simple classifications to complex tests and digital analysis. Analyze your data ad hoc, getting immediate results, while following your methodology and investigating exceptions at any time. Explore the data rapidly and completely, merge relational data to gain greater insight, and drill down in the data to find answers to questions.

Display & Reporting

View your results in an easy-to-understand, tabular format; one tab for each result. Commands display results either as a formatted table or as a graph. The log records activity so that you can review past analysis and quickly retrieve and compare results; gain repeatability and proof. Share pre-formatted tabular results with other applications. Integrate reports effortlessly into working paper packages, report documents, Crystal Reports, or any application that accepts HTML.

REPEAT ANALYSIS WITH ACL SCRIPTING

With a single mouse click, record all of the steps, actions, and results for any audit process as a script.



RESULTS PRESENTATION AND REPORTING

Graphically display results yet retain the ability to drill down to specific transactions. Export your results through integration with common enterprise reporting tools such as Crystal Reports.



■ acl.com
■ info@acl.com

ACL Services Ltd. ACL and the ACL logo are trademarks or registered trademarks of ACL Services Ltd. All other trademarks are the property of their respective owners.

© 2011 ACL Services Ltd. DS/DT/111011

Common User Interface

ACL provides a single point-of-view for easy, immediate access to data. For example, with a few clicks, you can move from analyzing server data, to mainframe data, to SAP ERP data, or data stored on networked PCs. This ensures optimized performance today and optimum flexibility in accessing new sources of data tomorrow.

Local Language Interface

ACL is internationalized to read and access both Unicode and non-Unicode data. All versions — including English, French, German, Japanese, Polish, Portuguese, Spanish, and simplified Chinese — provide assistance through dialog boxes, menus, and help files in the language selected. Work in your own language, while ACL software enables input, display, and output of scripts and data appropriate for your regional settings, such as currency, date/time, and number formatting.

Technical Specifications

ACL Desktop Edition can be used in conjunction within ACL AuditExchange™ as the client application or as a stand-alone PC application.

System Requirements

- Microsoft Windows® 7, Microsoft Windows® Vista Ultimate Edition (SP2) or Microsoft Windows® XP (SP3)
Note: ACL Desktop 9.2 is a 32-bit application that can run on either the 32-bit or 64-bit version of Windows 7.
- Pentium 1.8-gigahertz (GHz) processor or faster
- 1GB RAM
- 150MB hard drive space (80GB recommended) for AuditExchange application files and data files
Note: Significant additional disk space may be required to store data extracts, flat files, results, and audit archives.
- DVD-ROM drive (Not required if you are using the web download option.)
- TCP/IP connectivity
- Internet Explorer® 7.0 or higher

About ACL Services Ltd.

ACL Services Ltd. is the leading global provider of business assurance technology for audit and compliance professionals. Combining market-leading audit analytics software with centralized content management and exception reporting, ACL technology provides a complete end-to-end business assurance platform that is flexible and scalable to meet the needs of any organization.

Since 1987, ACL technology has helped organizations reduce risk, detect fraud, enhance profitability, and improve business performance. ACL delivers its solutions to 14,700 organizations in over 150 countries through a global network of ACL offices and channel partners. Our customers include 98 percent of Fortune 100 companies, 89 percent of the Fortune 500 and over two-thirds of the Global 500, as well as hundreds of national, state and local governments, and the Big Four public accounting firms.